

Request form

Anfrageformular



Former Fab®

Contact details Kontaktdaten

name: _____

company: _____

phone: _____

email: _____

address: _____

Entwicklung und Fertigung von Formschultern
Development and fabrication of forming shoulders

FormerFab® GmbH
Dresdner Straße 172 Eing. B
D-01705 Freital
Germany

Fon +49 351 850 721 60
Fax +49 351 850 721 69

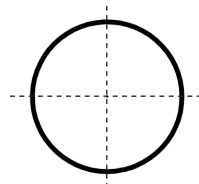
info@former-fab.de
www.former-fab.de

Bag specifications Beutel-Spezifikation

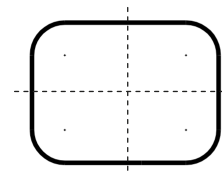
Forming cross-section Formquerschnitt:

Please mark the position and type of the vertical seal
Bitte zeichnen Sie die Position und Art der Längsnaht ein

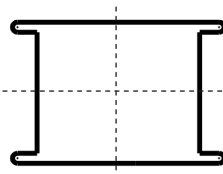
Round
Rund



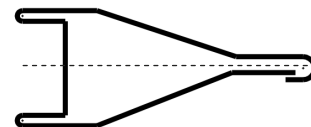
Rectangle
Rechteck



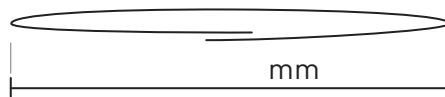
QuadroSeal
QuadroSeal



Doypack-style
Doypack-Style



Flat bag-width flache Beutelbreite:



Film specifications Folien-Spezifikation

Material Folienmaterial:

- mono material composite material paper containing
Monofolie Verbundfolie Enthält Papier

Thickness of film Foliendicke:

- < 50 µm 50 - 90 µm > 90 µm

Managing director: Dr. Henry Drut
Register court: Dresden, HRB 37098
VAT.-Id.Nr. DE315513782
Steuer-Nr. 203/108/14122
IBAN DE49 8504 0000 0141 4812 00
BIC COBADEFFXXX
Commerzbank Dresden

Request form

Anfrageformular



Former Fab®

Manufacturer of machine:
Maschinen-Hersteller

Machine model:
Maschinen-Typ

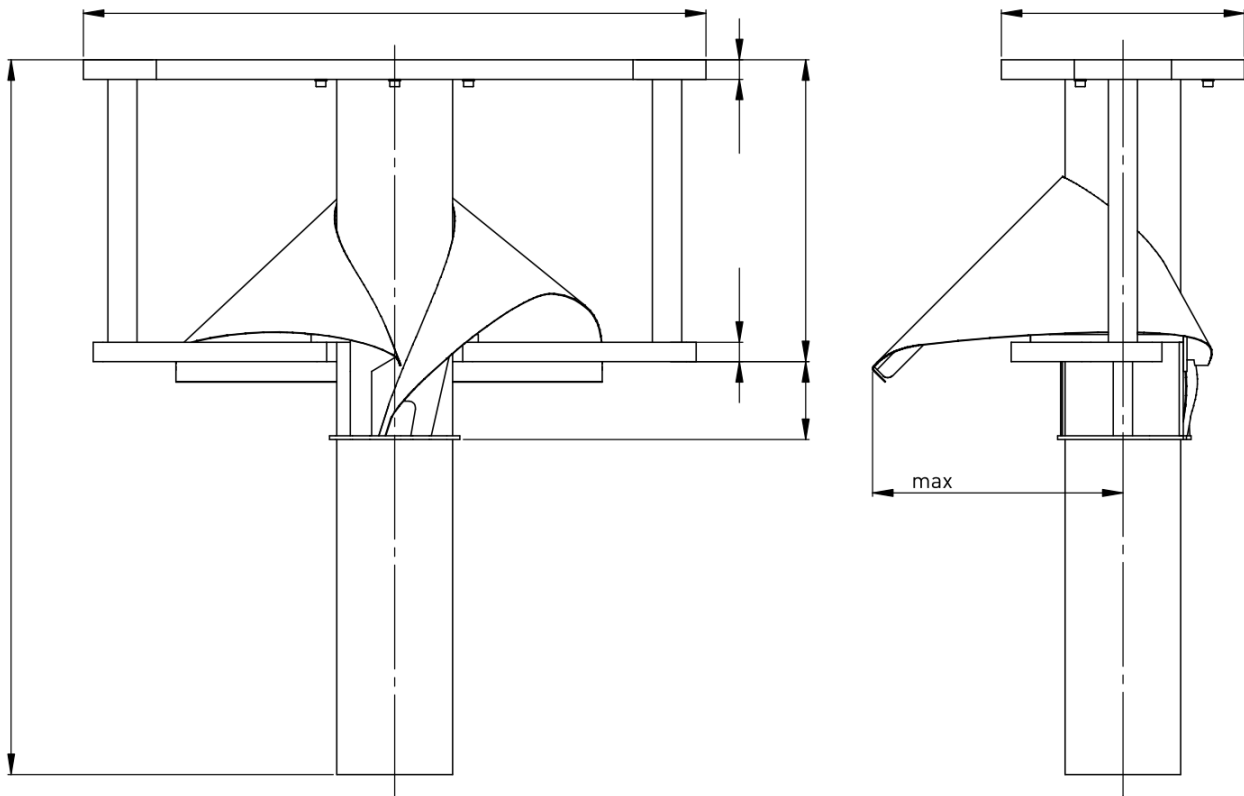
**Entwicklung und Fertigung
von Formschultern**
Development and fabrication
of forming shoulders

FormerFab® GmbH
Dresdner Straße 172 Eing. B
D-01705 Freital
Germany

Fon +49 351 850 721 60
Fax +49 351 850 721 69

info@former-fab.de
www.former-fab.de

Forming set specifications Formatsatz-Abmessungen



Special requirements spezielle Anforderungen

- Connector for aspiration
Anschluss zur Absaugung
- removable spreader
Spreizer mit Bajonett-Verschluss
- Barge
Schute
- Funnel
Trichter
-

Managing director: Dr. Henry Drut
Register court: Dresden, HRB 37098
VAT.-Id.Nr. DE315513782
Steuer-Nr. 203/108/14122
IBAN DE49 8504 0000 0141 4812 00
BIC COBADEFFXXX
Commerzbank Dresden

Request form

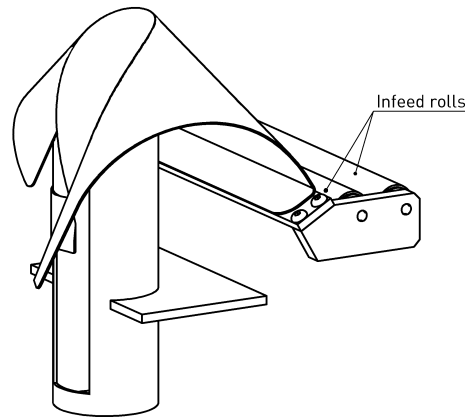
Anfrageformular



Former Fab®

Infeed rolls required:
Einlaufrollen benötigt

Yes / No
Ja / Nein



**Entwicklung und Fertigung
von Formschultern**
Development and fabrication
of forming shoulders

FormerFab® GmbH
Dresdner Straße 172 Eing. B
D-01705 Freital
Germany

Fon +49 351 850 721 60
Fax +49 351 850 721 69

info@former-fab.de
www.former-fab.de

Limits Beschränkungen

maximum height (H) [mm]:
Maximale Höhe

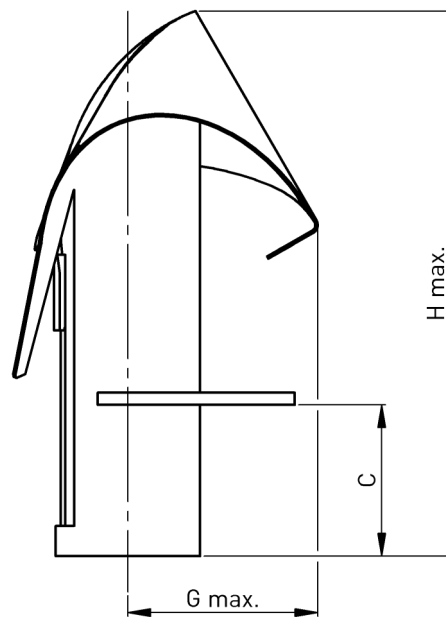
distance (C) [mm]:
Abstand (C)

maximum depth (G) [mm]:
Maximale Tiefe

Add more limits or restrictions
(e.g. inner diameter)

if it is necessary:

Ergänzen Sie weitere Beschränkungen
(z.B. Innendurchmesser), wenn sie notwendig sind



Managing director: Dr. Henry Drut
Register court: Dresden, HRB 37098
VAT.-Id.Nr. DE315513782
Steuer-Nr. 203/108/14122
IBAN DE49 8504 0000 0141 4812 00
BIC COBADEFFXXX
Commerzbank Dresden